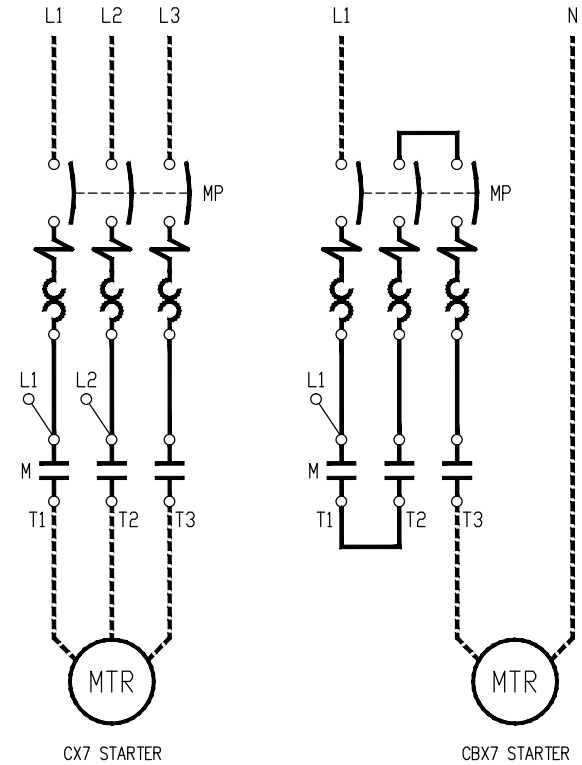
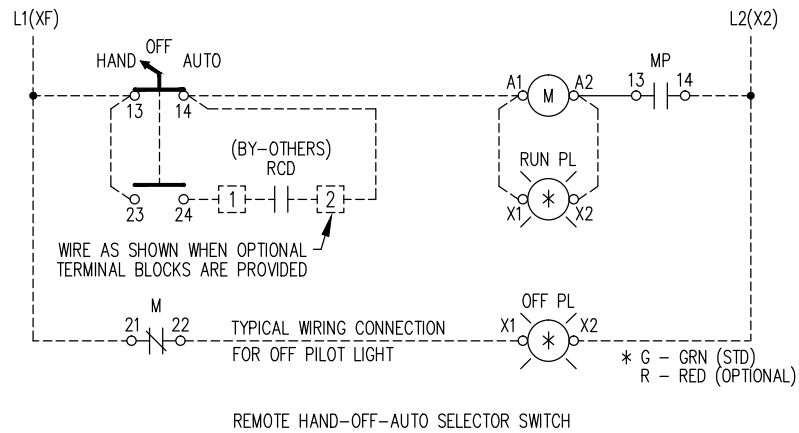
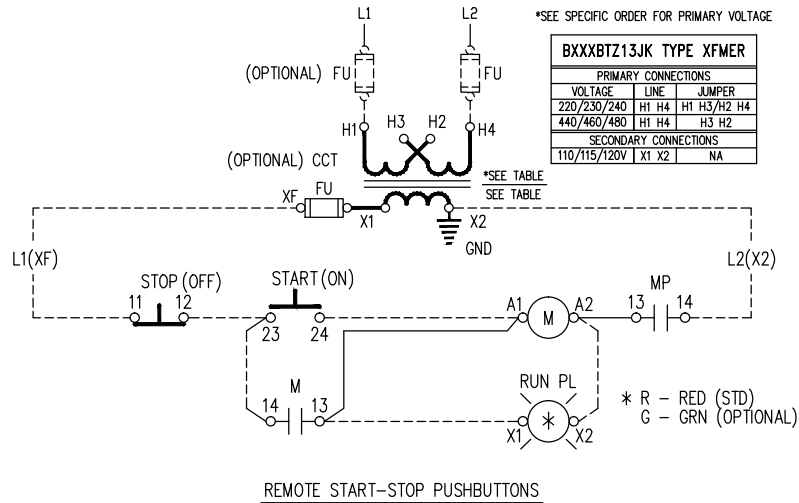


CUSTOMER TO SUPPLY PROPER BRANCH
CIRCUIT PROTECTION AS PER LOCAL CODES.
(USE 75°C COPPER WIRE ONLY)



NOTES:

- 1) RCD: STANDS FOR REMOTE CONTROL DEVICE BY CUSTOMER.
- 2) MP: KT7 "TYPE E" MOTOR CONTROLLER.
- 3) X2 TERMINAL GROUNDED AS STANDARD, REMOVE GROUND IF NOT REQUIRED.

REV	DESCRIPTION	DATE	BY
4	REVISED SINGLE PHASE POWER CIRCUIT.	12-10-14	CG
3	GENERAL REVISION	11-06-12	MB
2	CHANGED PUSH BUTTON CONTACT NUMBERS FOR D7	06-13-07	GS
1	GENERAL REVISION	06-30-06	JR

NOTICE

THIS DRAWING IS THE CONFIDENTIAL PROPERTY OF SPRECHER+SCHUH, INC. and, as such, is subject to recall at any time. The drawing may not be reproduced, used or disclosed for any purpose except as authorized by SPRECHER+SCHUH, INC.

DRAWN BY:
JR

CHECKED BY:
JR

APPROVED BY:
-

DATE
11-30-00

TYPE E COMBINATION CONTROLLER
FULL VOLTAGE NON-REVERSING
AC CONTROL
W/O COVER CONTROL

sprecher+schuh HOUSTON, TEXAS

DWG. NO. CX7 WS-114-02A SHEET 1 OF 2 SERIES 100