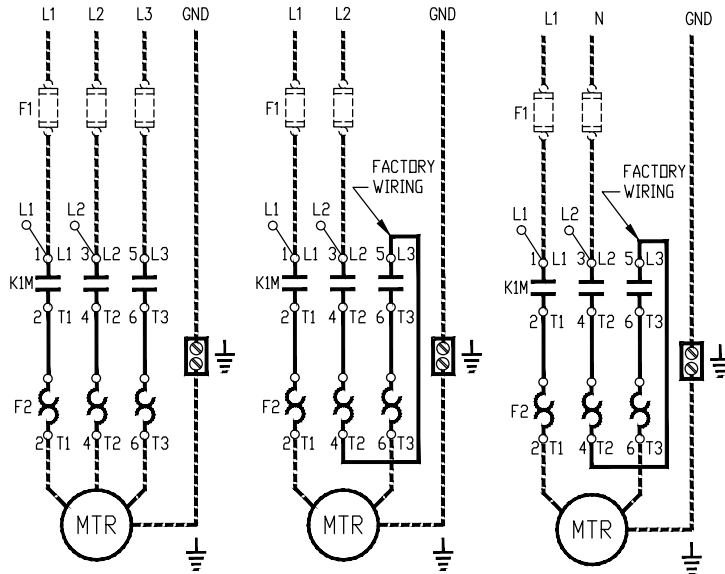


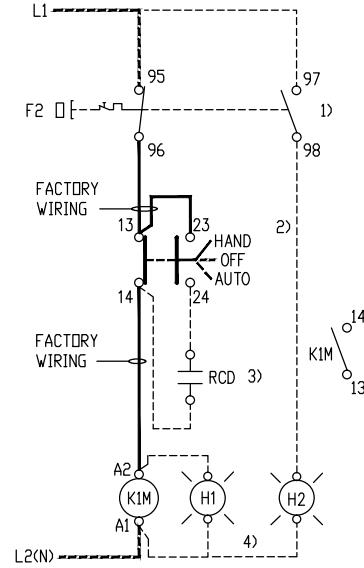
CUSTOMER MUST PROVIDE PROPER BRANCH CIRCUIT PROTECTION (F1)
SEE THE APPLICATION INSTRUCTION SHEET - COMPONENT SELECTION TABLES
FOR MAX. FUSE SIZE & CLASS AND APPLICABLE SHORT CIRCUIT RATING
(USE 75°C COPPER WIRE ONLY)



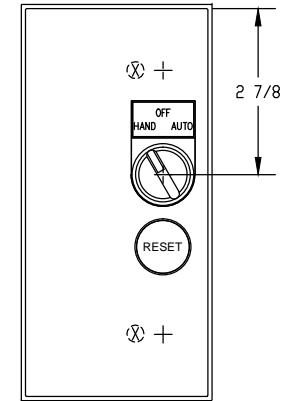
3-PHASE
CAK7 W/CT7N, CEP7 OL
FACTORY WIRING

2-PHASE
CBK7 W/CT7N, CEP7S_OL
FACTORY WIRING

SINGLE-PHASE
CBK7 W/CT7N, CEP7S_OL
FACTORY WIRING



KS7-COS1
WITH HAND-OFF-AUTO SELECTOR SWITCH
FACTORY WIRING



THIS DRAWING IS FOR USE WITH KS7-COS1 ENCLOSURE
with integrated RESET push button, factory modified to
add the H-O-A SWITCH. A pilot device hole must be
drilled as shown above.

DANGER: THE OPENING OF THE BRANCH CIRCUIT PROTECTIVE DEVICE MAY BE AN INDICATION THAT
A FAULT CURRENT HAS BEEN INTERRUPTED.
TO REDUCE THE RISK OF FIRE OR ELECTRIC SHOCK, CURRENT-CARRYING PARTS AND OR OTHER
COMPONENTS OF THE CONTROLLER SHOULD BE EXAMINED AND REPLACED IF DAMAGED.

DANGER: A MOTOR CONNECTED TO THE CIRCUIT MAY START AUTOMATICALLY WHEN THE OVERLOAD
RELAY IS SET IN THE AUTOMATIC RESET POSITION.

A. C. Coil Code	Voltage Range		Control Source	
	50 Hz	60 Hz	CBK7	CAK7
24Z	24V	24V	Separate	Separate
120	110V	120V	Common	Separate
208	~	208V	~	Common
220W	~	208V-240V	Common	Common
240	~	220V	Common	Common
D. C. Coil Code	Voltage Range		Control Source	
	VDC		CBK7	CAK7
24E	24V		Separate	Separate

NOTES:

- 1) OL INDICATION CONTACT 97-98 (USE IS OPTIONAL).
- 2) H-O-A SWITCH: D7D-SM32X20.
- 3) RCD: REMOTE CONTROL DEVICE BY OTHERS.
- 4) OPTIONAL PILOT LIGHTS.

-	-	-	-
-	-	-	-
-	-	-	-
2	REVISED NOTES.	4-23-12	MR
1	REVISED NOTES.	3-10-11	MB
REV	CHANGE	DATE	BY

NOTICE
THIS DRAWING IS THE CONFIDENTIAL
PROPERTY OF SPRECHER+SCHUH, INC.
and, as such, is subject to recall at
any time. The drawing may not be
reproduced, used or disclosed for
any purpose except as authorized by
SPRECHER+SCHUH, INC.

DRAWN BY:
JR
CHECKED BY:
JR
APPROVED BY:
JR
DATE
7-08-09

KWIKSTARTERS II
FULL VOLTAGE NON-REVERSING
CAK/CBK 7-9...23- * - ◆ - P0+1R7
CAK/CBK X207- * - ◆ - P0+1R7

sprecher+schuh HOUSTON, TEXAS

DWG. NO. CAK7 WS-102-07 SERIES 100