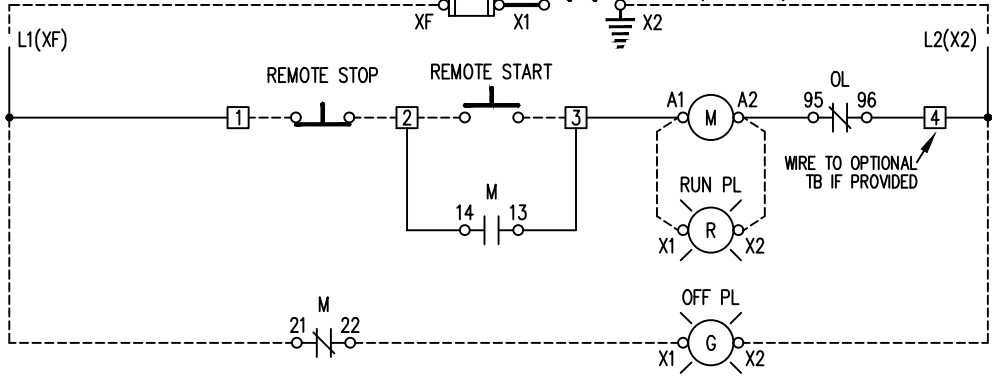
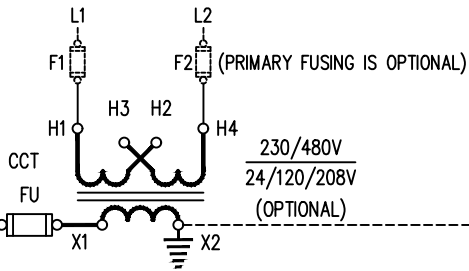
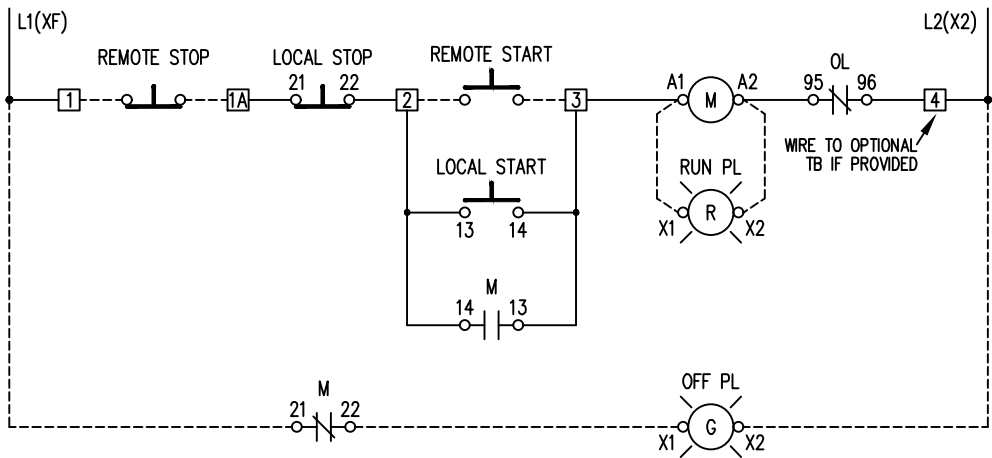


| LINE | JUMPER | |
|------|--------|-------------|
| 230V | H1 H4 | H1&H3 H2&H4 |
| 480V | H1 H4 | H2&H3 |



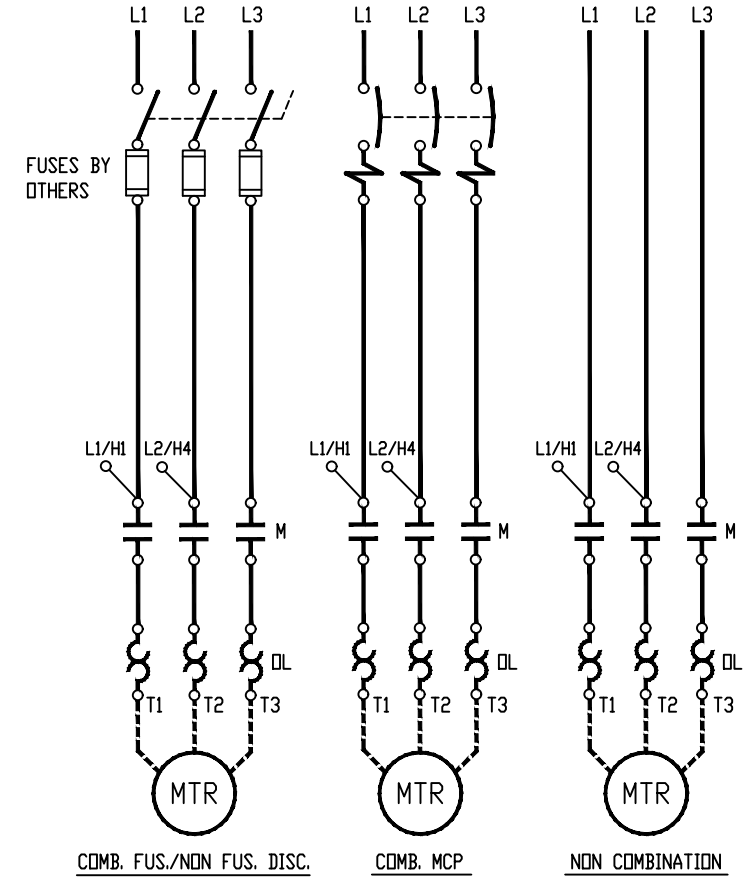
REMOTE START-STOP PUSHBUTTONS W/ OPTIONAL TERMINAL SUPPLIED



LOCAL & REMOTE START-STOP PUSHBUTTONS W/ OPTIONAL TERMINAL SUPPLIED

NOTES:

- 1). X2 TERMINAL GROUNDED AS STANDARD, REMOVE IF NOT REQUIRED.
- 2). IF CCT IS SUPPLIED DELETE TERMINAL NO. 4.



| | | | |
|-----------------|--|-----------------------------------|---------------|
| 6 | GENERAL REVISION | 4-3-2017 | CG |
| REV. | DESCRIPTION | DATE | APP'D |
| DESIGNED EAP | FULL VOLTAGE NON-REVERSING MAGNETIC STARTER W/ LOCAL-REMOTE START-STOP PB THREE PHASE | sprecher+ schuh HOUSTON, TEXAS | |
| DRAWN EAP | | | |
| APPROVED PAB | | | |
| DATE 12-87 | | | |
| DWG. NO. | | CAT WS-101-06 | SERIES 100 |