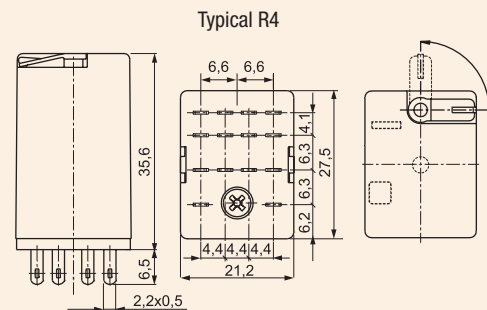


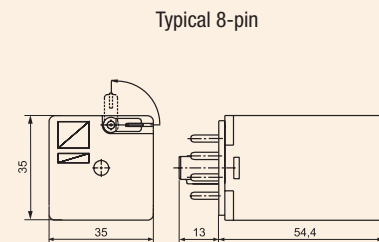
## R2N/R4N

### General Purpose Miniature Power Plug-in Relays



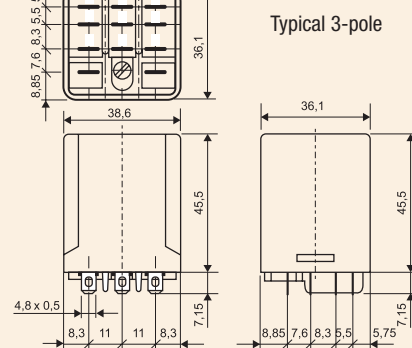
## R15

### Tube Base Power Plug-in Relays



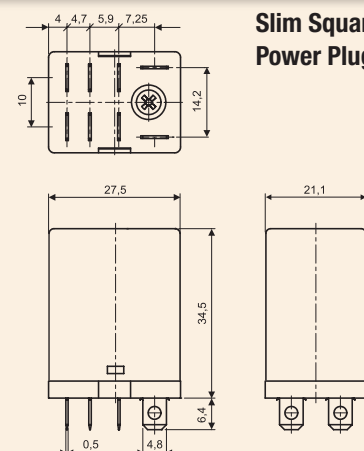
## RUC

### Square Base Power Plug-in Relays



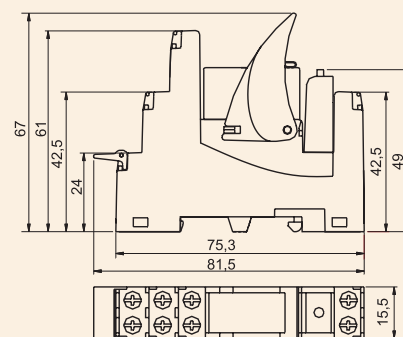
## RY2

### Slim Square Base Power Plug-in Relays



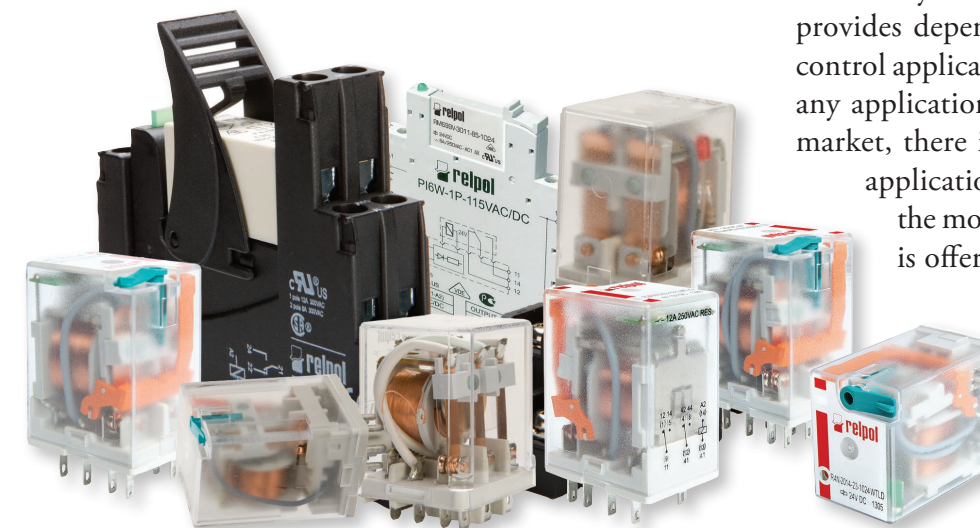
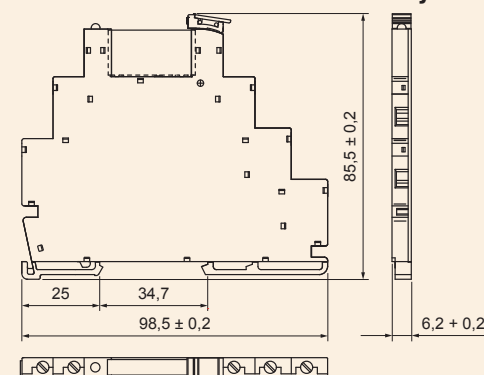
## PI84/85

### Interface PCB Relays



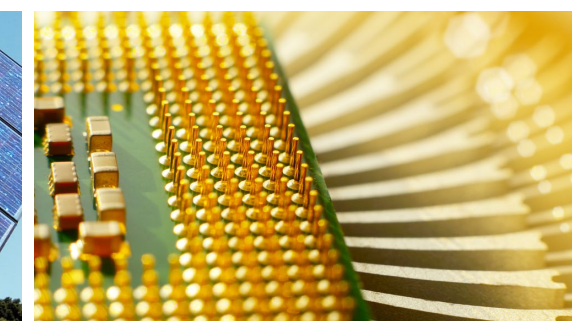
## PIR6W

### Slim Interface Terminal Block Relays



The variety of R Series Plug-In Relays offered by Relpol S.A.® provides dependable, economical solutions for a range of control applications. A flexible solution suitable for virtually any application is the R2N/R4N relay. For the tube-base market, there is the rugged R15 relay. For higher current applications, there is the square-base RUC relay and the more compact RY2 blade-style relay. Each model is offered in ten coil voltages.

Two types of Interface Relays offer current capabilities from 6 to 16 amps. The Relpol S.A.® PI84/PI85 Interface PCB Relays offer a unique design for high current applications.



### Rugged and reliable

The entire R Series is built for dependability and longevity. Equipped with either nickel cadmium or silver nickel cadmium-free contacts, these hearty relays can accommodate currents as low as 10mA @10V, or 5mA @5V respectively. Contacts have a mechanical life of 20 million cycles, and provide high switching capacity.

### Convenient features

Each R Series relay has a mechanical “flag” and one piece “push-to-test” button and latching lever. The button permits momentary testing of relay contacts, while the lever allows relay contacts to remain closed for longer testing periods until released to normal. These features, standard on every Relpol S.A.® R Series relay offered by Sprecher + Schuh, save time and labor when troubleshooting control circuitry. An optional LED position indicator shows whether the relay is energized, and whether the contacts have changed state.

### DIN-rail mounted industrial relay sockets

R Series relays feature slim, IEC-type sockets which can be DIN-rail mounted or fixed directly to the panel with screws. Pin numbers are clearly identified for easy installation and maintenance. Relays can be quickly and easily fastened to the sockets. Optional retainer clips provide additional security in high vibration environments.

### Safety approvals

The R Series from Relpol S.A.® meets a number of international approvals, which vary based on the relay type. International and domestic approvals include UL recognized, CE marked, and CSA and VDE certified, cULus & cUL recognized, and all are RoHS compatible.

Contact your Sprecher + Schuh representative for complete product information.

## Plug-in Ice cube Power Relays

Built-in LEDs

Coil Voltage  
6 - 110VDC  
6 - 240 VAC

Miniature R2N/R4N  
in GZT Socket

- 2- and 4-pole
- R2N - 12A DPDT
- R4N - 6A 4PDT
- Mechanical flag indicator
- Push-to-test/ Latching lever
- Silver Nickle contacts
- Bi-polar DC coils
- 

2-pole R15  
in PZ8 Socket

- 10A DPDT
- Push-to-test/ Latching lever
- Bi-polar DC coils
- 

3-pole R15  
in PZ11 Socket

- 10A DPDT
- Push-to-test/ Latching lever
- Silver Nickle contacts
- Bi-polar DC coils
- 

RUC  
in SB11 Socket

- 15A DPDT / 10A 3PDT
- 2- and 3-pole
- Nickle Cadmium contacts
- 

DIN Mounted

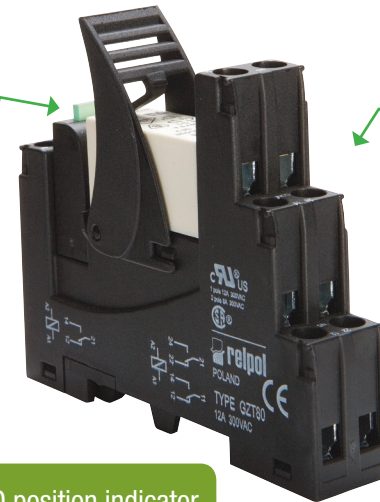
- IEC-type sockets
- Easy installation

RY2  
in SB08 Socket

- 12A DPDT
- 2-pole
- Nickle Cadmium contacts
- Bi-polar DC coils
- 

## Interfaces

The Relpol® PI84/PI85 Interface PCB Relays offer a unique design for high current applications. The low current input and power consumption with load capabilities of high current switching is ideal for limited input sources and panel space savings.



PI84 / PI85 Interface  
PCB Relay

- PI84 - 8A DPDT
- PI85 - 16A SPDT
- Protective module
- Silver Nickle Contacts
- Replacement Relays available
- Coil Voltage:  
12 VDC  
24 VAC/DC  
120 VAC

LED position indicator

### A full featured model in one small package

The PI84/PI85 Interface PCB relays are offered as a complete package which includes the following five factory installed pieces:

1. PCB (Printed Circuit Board module)
2. Relay socket
3. LED position indicator
4. Retainer clip
5. Description plate

### Rugged and reliable

With a mechanical life of 20 million cycles, and high contact switching capacity due to their hard nickel cadmium contacts, the PI84/PI85 Interface PCB relays provides long lasting high quality contact reliability even after millions of operations.

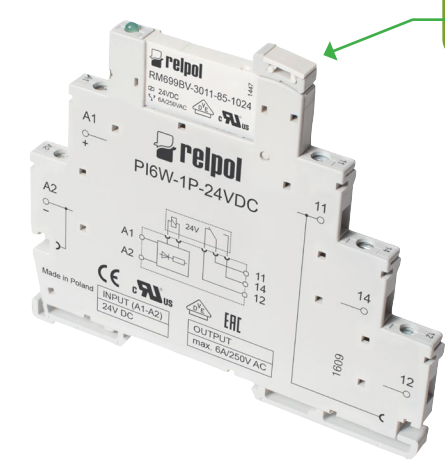
### DIN-rail mounted relay sockets

The PI84/PI85 Interface relay DIN-mounted sockets offer a slim space savings design. The relay socket includes a retainer clip to firmly hold the PCB relay and a description plate as standard.



## Terminal Block Relays

The Relpol® PIR6W Slim Interface Terminal Block Relay is ideally compact, designed for a variety of high-density isolation and interposing applications.



Slim Interface  
Terminal Block Relay

- 6A SPDT
- 1-Pole SPDT
- Silver Tin Oxide Contacts
- Change over relay with built-in LED Indicator
- Coil Voltage:  
12 VDC  
24 VDC  
24 VAC/DC  
115VAC/DC
- Replacement Relays available

### Low input current, high switching capabilities

The PIR6W Slim Interface Relays are offered as a complete package which includes the following:

1. Changeover relay, rated load 6 A / 230 V (ACI)
2. Interface Relay socket with built-in LED position indicator
3. Description plate

The PIR6W Slim Interface Relay contacts are rated at 6 amps resistive @230VAC and available in SPDT (1 form - C contact). The minimum contact current capabilities are 100mA at 24V. The coil power consumption is approximately 0.3...0.8VA AC or 0.3...0.9W DC. The PIR6W Interface Relays are available in 24V DC, 24V AC/DC and 120V models.

### Rugged and reliable

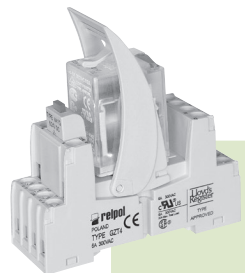
With a mechanical life of 20 million cycles, and high contact switching capacity due to their silver tin oxide (AgSnO2) contacts, the PIR6W Interface Relays provides long lasting high quality contact reliability even after millions of operations.

### DIN-rail mounted

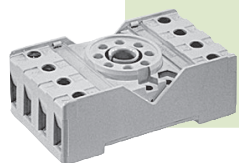
The PIR6W Slim Interface Relays are DIN-rail mountable which can be easily installed along side other control terminal blocks for a space saving design.



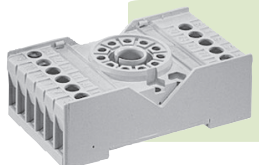
## Sockets



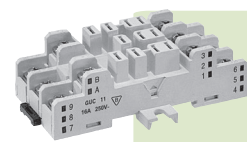
GZT2/GZT4 Socket with GZT4-0040S retainer clip  
For R2N and R4N Miniature power plug-in relays.



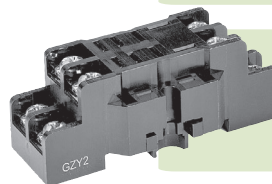
PZ8 Socket  
Screw Terminal, Relpol Tube Base 8-PIN Socket for R15 relays



PZ11 Socket  
Screw Terminal, Relpol Tube Base 11-PIN Socket for R15 relays



SB11 Socket  
Screw Terminal, Square Base Blade type Socket for RUC relays



SB08 Socket  
Screw Terminal, Square Base Blade type Socket for RY2 relays.

Contact your Sprecher + Schuh representative for complete product information.