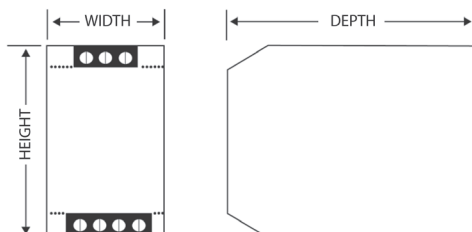


Dimensions

- Dimensions are in millimeters (inches).
- Dimensions not intended for manufacturing purposes.



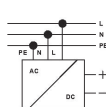
FLEX	WIDTH	HEIGHT	DEPTH
FLEX6024A	50 (1.97)	120 (4.72)	50 (1.97)
FLEX9024A, 17024A FLEX9024B, 17024B	55 (2.17)	110 (4.33)	105 (4.13)
FLEX28024A & B	72 (2.83)	115 (4.53)	135 (5.31)
FLEX50024A & B	85 (3.35)	120 (4.72)	140 (5.51)

Electrical Connection

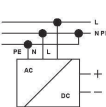
Input - Output power connection:

Input:		
FLEXxxxxxA series	1 Phase Switching Power Supplies	L, N, PE ⊕
FLEXxxxxxB series	1Phase Switching Power Supplies	L, N, PE ⊕
FLEXxxxxxB series	2 Phase Switching Power Supplies	L1, L2, PE ⊕
FLEX500xxB series	3 Phase Switching Power Supplies	L1, L2, L3, PE ⊕
Output:	24 Vdc is made via the	(+), (-).

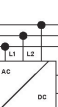
1 Phase L N PE



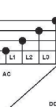
1 Phase L N PE



2Phase



3 Phase



Signaling:

Red LED (DC OK) Status:

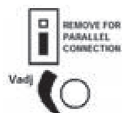
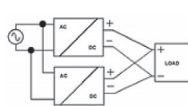
Output voltage OK: Lights up permanently
Switch OFF, in Overload and Short Circuit conditions
Blink, in Overload and Short Circuit conditions

Jumper Setting

	Hiccup Mode	Manual Reset	Continuous Mode
Output voltage OK: Lights up permanently	■	■	■
Switch OFF, in Overload and Short Circuit conditions		■	■
Blink, in Overload and Short Circuit conditions	■		

Parallel Connection, to Increase Output Power:

- Made parallel connection with same model of power supply to increase the output power.
- Adjust the output approximately to the same value ($\pm 20\text{mV}$) applying 1-2 A load to all devices output before connecting them in parallel.
- Easy parallel connections Jumper. In FLEX280xxX and FLEX500xxX for more power, you must change position of the jumper to enable parallel connection. In this mode you can put in parallel up to 4 power supply



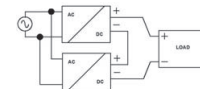
Easy Parallel connection
OFF(factory selection)



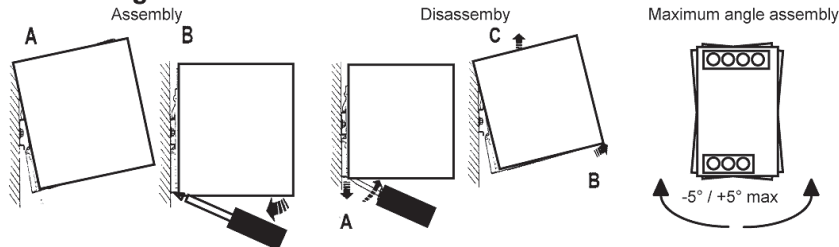
Easy Parallel connection ON

Serial Connection:

- It is possible to connect as many units in series as needed, providing the sum of the output voltage does not exceed 150Vdc.
- Voltages with a potential above 60Vdc are not SELV any more and can be dangerous. Such voltages must be installed with a protection against touching.
- For serial operation use power supplies of the same type.
- Grounding of the output is required when the sum of the output voltage is above 60Vdc.
- Keep an installation clearance of 15mm (left/right) between two power supplies and avoid installing the power supplies on top of each other. Note: Avoid return voltage (e.g. from a decelerating motor or battery) which is applied to the output terminals.



Rail Mounting:



Other models / modules must have a minimum vertical and horizontal distance of 10 cm to this power supply in order to guarantee sufficient auto convection. Depending on the ambient temperature and load of the device, the temperature of the housing can become very high!