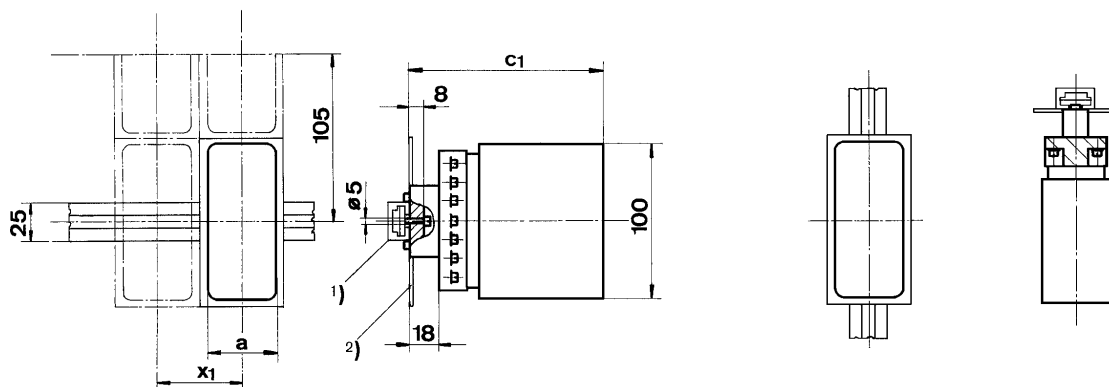
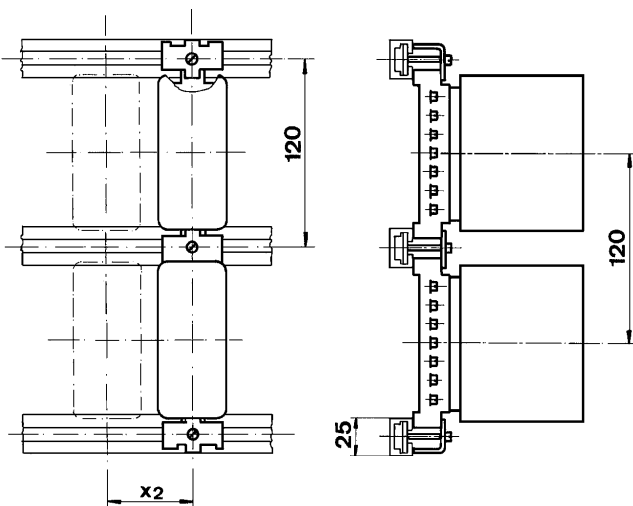


Socket "K" – Wiring from front

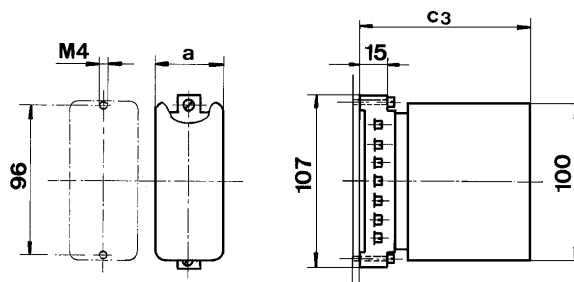
Dimensions are in millimeters (inches). Dimensions not intended for manufacturing purposes.



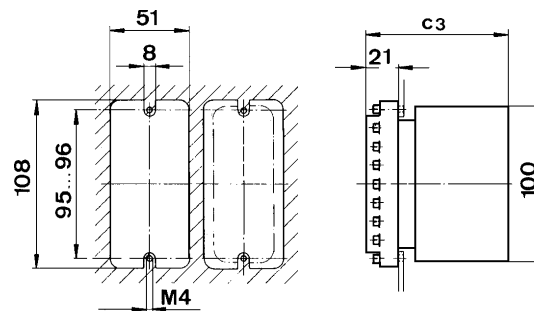
Socket "U" – Wiring from front



Socket "U" – Assembly from front



Socket "U" – Assembly from rear



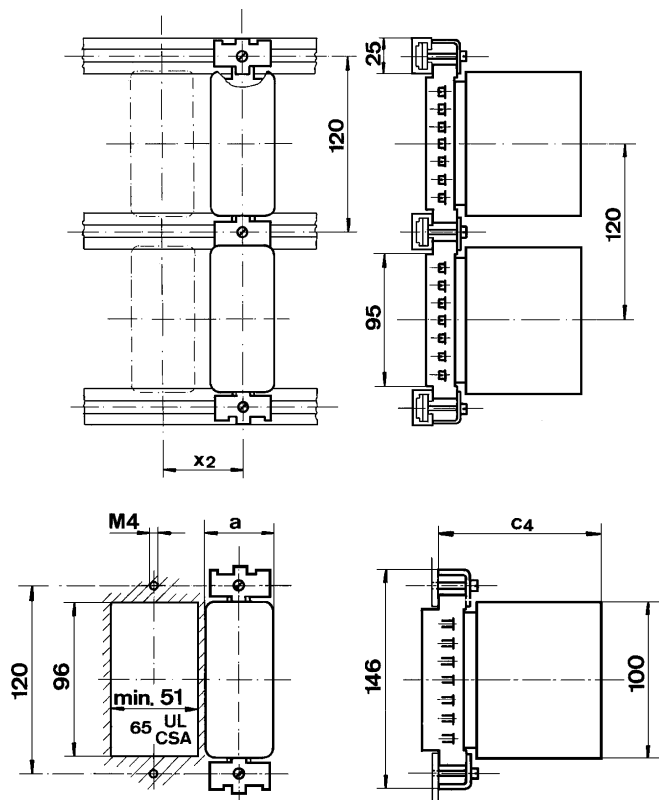
Dimensions Table (mm)

| Type | a | c1 | c2 | c3 | c4 | c5 | x1 | x2 | x3 |
|------|----|-----|-----|-------|-----|-----|----------|----------|----------|
| AC | 40 | 106 | 108 | 91.5 | 83 | 103 | 50/55/60 | 48 (min) | 42 (min) |
| DC | 45 | 125 | 127 | 110.5 | 102 | 122 | 50/55/60 | 48 (min) | 48 (min) |

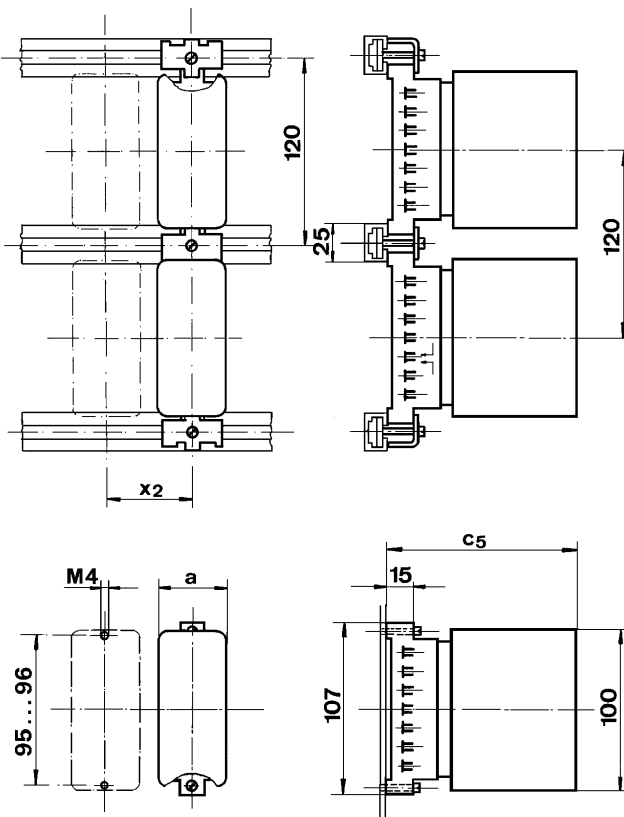
1) Assembly onto rail 25mm wide. Use adaptor on page G31 (item 40) for 29mm and 32mm rails.

2) Spacer 50/55/60 mm. See page G31 item 18.

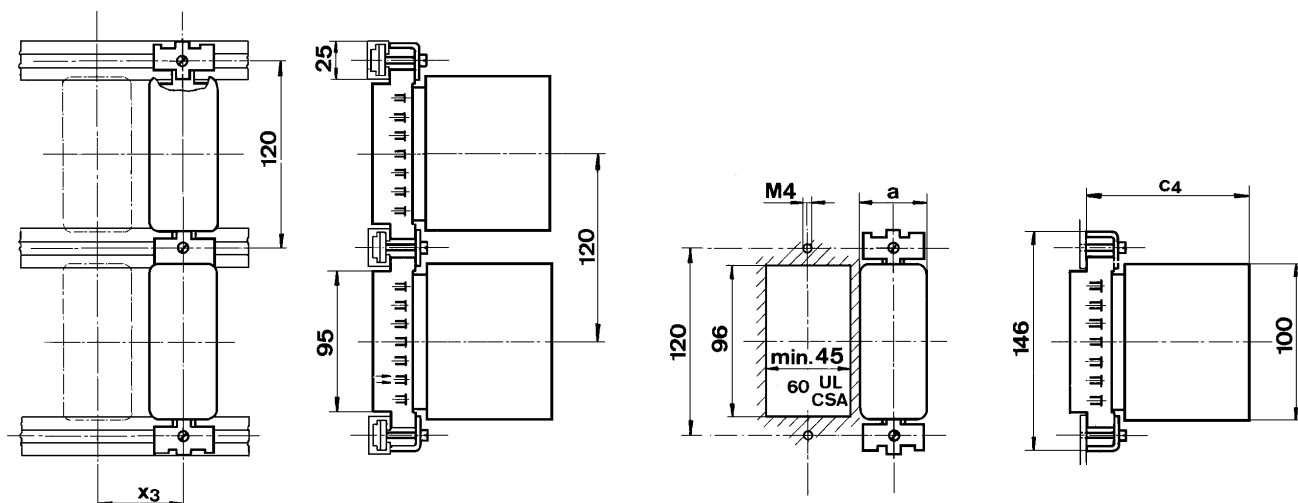
Socket "U" – Wiring from rear



Socket "F" – Wiring from front



Socket "F" – Wiring from rear



Dimensions are in millimeters. Dimensions not intended for manufacturing purposes.

| Type | a | c1 | c2 | c3 | c4 | c5 | x1 | x2 | x3 |
|------|----|-----|-----|-------|-----|-----|----------|----------|----------|
| AC | 40 | 106 | 108 | 91.5 | 83 | 103 | 50/55/60 | 48 (min) | 42 (min) |
| DC | 45 | 125 | 127 | 110.5 | 102 | 122 | 50/55/60 | 48 (min) | 48 (min) |